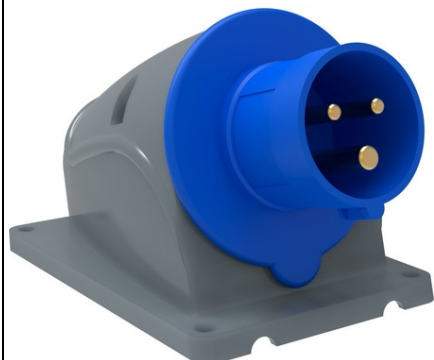


Furnizor: **Sc Trivolt Distribution SRL**
Reg. com.: J23/3300/2016
CIF: RO36421140
Adresa: Strada Apusului nr 3 (primul
sens giratoriu Tehodor Pallady-
Autostrada Soarelui), Catelu, Ilfov
Banca: BRD
IBAN: RO34BRDE441SV13182234410



IEK FLUSH PRIZA SSI-513 16A-6H/200-250V 2P+PE IP44 MAGNUM

Original design of MAGNUM power connectors is developed by IEK engineers with strict compliance with requirements of Russian and international standards and considering demands of users - professional electricians and fitters. The solutions utilized in MAGNUM power connectors combine the best global practice and a number of unique special improvements from IEK engineers. The advanced design solutions combined with high-quality materials and high technological level of manufacture guarantee high reliability and safety of design, ergonomic and environment safe products, maximum convenience of mounting and dismantling of MAGNUM power connectors. MAGNUM power connectors can be used for connection of construction electrical equipment and tools, power supply of temporary structures and workers' cabins, machine-tools and other industrial equipment, sport and entertainment facilities, hotels, camp sites, etc. MAGNUM IEK power connectors are manufactured in Russia, at the main IEK industrial facility. The connectors plastic parts are made from self-extinguishing materials, have high strength and dielectric properties, withstand shock loads, wearing and attrition. All connectors plastic parts have strengthened design able to withstand high stresses and harsh operating conditions.

Strengthened conductor connection assembly for all connectors.

The securely attached covers protect from ingress of dust and moisture into the connector.

Location of the body screws ensures maximum convenience.

Operation in moist environment is possible (IP44).

Item's rough surface ensures convenient grip, which is of particular importance when working in adverse weather conditions (e.g. at high humidity or negative temperatures).

Nominal voltage: 200

IEC-amperage: 16

Voltage acc. EN 60309-2: EV009024

Degree of protection (IP): EV006418

Clock hour position: 6

Nominal electric insulation strength: 500

Operating voltage range: 200-250

Max. conductor cross section: 1,0-2,5

Nominal frequency: 50/60

Number of poles: 2

Connection system: EV001008

Cable entry: EV004016

Material: EV000139

Identification colour: EV000080

Ambient temperature: -25...+40

Angle of plug: EV000409

Construction type: EV000990

Pret: 36,96 lei (TVA inclus)

Detalii online: <https://www.materialelectrice.ro/flush-priza-ssi-513-16a-6h-200-250v-2p-pe-ip44-magnum-311498>