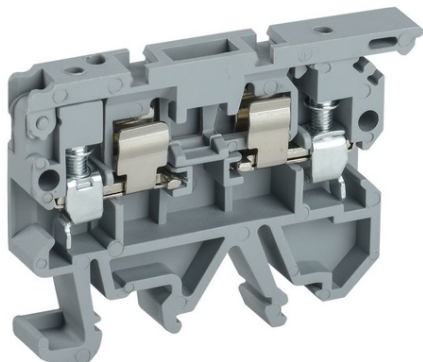


Furnizor: **Sc Trivolt Distribution SRL**
Reg. com.: J23/3300/2016
CIF: RO36421140
Adresa: Strada Apusului nr 3 (primul
sens giratoriu Tehodor Pallady-
Autostrada Soarelui), Catelu, Ilfov
Banca: BRD
IBAN: RO34BRDE441SV13182234410



IEK SCREW TERMINAL KWI-4-P WITH SOCLU FUZIBIL 5X20 GRI

Screw terminals are designed for permanent, safe and compact connection of conductors of different cross sections in orderly distribution systems inside electrical cabinets. They are used to secure phase, neutral and protective conductors. Mounted on a DIN rail.

Terminal colors: gray, blue, yellow, green, red, black, orange, yellow-green (PE). Insulation enclosure made of flexible and impact-resistant flame-resistant polyamide PA6.6, complies with UL94 V0 classification, has excellent resistance to corrosive environments and temperatures.

It is possible to connect conductors with nominal cross-section, both with and without cable lugs.

Extensive range of accessories: end caps, marking plates, jumpers.

Temperature over test (max 45°C).

Test to withstand a current of 120A per 1mm² for 1 second.

Voltage drop test (not more than 3.2mV). Connectable conductor cross section solid-core: 1,5...6

Connectable conductor cross section multi-wired: 1,5...4

Rated current In: 6,3

Nominal rated voltage: 500

Type of electrical connection 2: EV000415

Connection position: EV001224

Number of poles: 1

Number of clamp positions per pole: 2

Mounting method: EV005503

Material insulation body: EV000402

Operation temperature: -60...+110

Inflammability class of insulation material acc. with UL94: EV004429

Width/grid dimension: 8.2

Length: 49

Colour: EV000270

Nominal operating AC voltage $U_e \leq 800$

Nominal DC operating voltage $U_e \leq 800$

Nominal frequency: 50

Rated insulation voltage U_i : 6000

Max. conductor cross section: 4

Material clamp: EV000179

Material housing: EV000402

Ambient class: IEK V0000009

Degree of protection (IP): EV006404

Width: 8,2

Height: 59

Nominal Attachment Capacity: 1,5...4

Quantity in the kit: 50

Model: IEK V0000506

Minimum section: 1.5

Current-carrying part material: EV000149

Nominal insulation voltage: 1000

Fuse size: 5N...20

Nominal fuse current: 6.3

Degree of protection - IP with blanking: EV006405

Degree of protection - IP without blanking: EV006404

Fuse class: EV004701

Relative air humidity: ≥ 90

Pollution degree: EV000069

Maintainability: EV000494

Rated surge voltage invariability: 6

Type of electrical connection 1: EV000415

Pret: 0,00 lei (TVA inclus)

Detalii online: <https://www.materialeelectric.ro/screw-terminal-kwi-4-p-with-soclu-fuzibil-5x20-gri-309485>