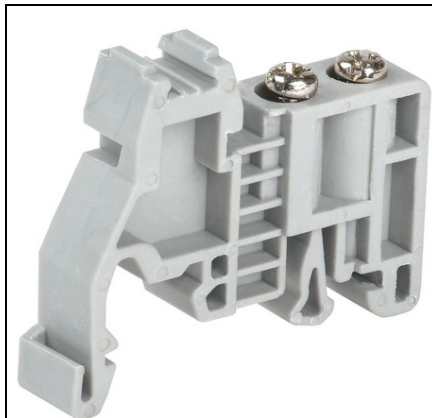


Furnizor: **Sc Trivolt Distribution SRL**
Reg. com.: J23/3300/2016
CIF: RO36421140
Adresa: Strada Apusului nr 3 (primul
sens giratoriu Tehodor Pallady-
Autostrada Soarelui), Catelu, Ilfov
Banca: BRD
IBAN: RO34BRDE441SV13182234410



IEK END STOP (LIMITER WITH MARKING) ON DIN RAIL

It is used for fixing terminal assemblies and modular equipment, circuit breakers, and other products on the DIN rail. By installing the marking plate holder, it is also used for marking and visual separation of rows. Mounted on DIN rail an omega or G-type The insulating housing is made of elastic and impact-resistant fire-resistant polyamide, which has excellent resistance to aggressive environments and temperature. Reliable installation and easy disassembly on the DIN rail due to the convenient design. Colour:

EV000270

Mounting method: EV005503

Type of latching: EV005489

Material: EV000139

Inflammability class of insulation material acc. with UL94: EV004429

Width/grid dimension: 8

Material quality: EV000402

Pret: 1,31 lei (TVA inclus)

Detalii online: <https://www.materialeelectrice.ro/end-stop-limiter-with-marking-on-din-rail-309415>