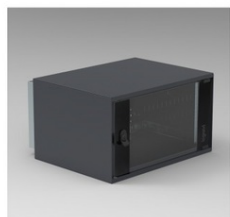


Furnizor: **Sc Trivolt Distribution SRL**  
Reg. com.: J23/3300/2016  
CIF: RO36421140  
Adresa: Strada Apusului nr 3 ( primul  
sens giratoriu Tehodor Pallady-  
Autostrada Soarelui), Catelu, Ilfov  
Banca: BRD  
IBAN: RO34BRDE441SV13182234410



**LEGRAND WALL-MOUNTING ENCLOSURES LCS<sup>3</sup> CU USA DIN  
STICLA - CAPACITY 9U - ADANCIME 600 MM , DEPTH 525 MM AND  
INALTIME 476 MM**

Caracteristici tehnice

Wall-mounting cabinets with glass door

Comprise:

a wall element with integrated strain relief profile

4 front and rear bars

2 cable entry plates (top and bottom)

a set of two 19" profiles with adjustable depth (in steps of 50 mm) and a pattern of holes on the side allowing accessories to be fitted. The casing consists of two identical upper and lower panels with ventilation slots at the rear, two identical side panels and a

Securit glass door with an EK-333 lock and a handle. Possibility to adjust the cable holes' size on the spot thanks to the handy bend-way fingers

Width: 600 mm

Colour: RAL 9011

Finishing: powder coating

Max. load: 100 kg

Supplied with 1 rear plate, 4 depthwise bars, 2 cable entry plates, 2 x 19" profiles, 2 roof and floor plates, 2 side panels, 1 glass door, 1 assembly set, including assembly guide

Capacity: : 9 U

Width: : 600 mm

Depth: : 525 mm

Height: : 476 mm

Caracteristici generale

Legrand cabling system LCS<sup>3</sup> enclosures - wall-mounting cabinets

Pret: 0,00 lei (TVA inclus)

Detalii online: <https://www.materialeelectrice.ro/wall-mounting-enclosures-lcs3-cu-usa-din-sticla-capacity-9u-adancime-600-mm-depth-525-mm-and-inaltime-476-mm-237320>